

Celeste Raker-Dillon
at last year's Taste of
Indian Spring.

March 2008
800+ Homes

Indian Spring

News
www.iscaonline.com

**March 31: General Meeting • April 14: Taste of Indian Spring
April 19: Neighborhood Clean Up**

Taste of Indian Spring is Monday, April 14

By Celeste Raker-Dillon

The annual ISCA Taste of Indian Spring is scheduled for Monday, April 14 at 6:30 p.m. in the Highland View Elementary School All Purpose Room, thanks to the cooperative efforts of the Highland View PTA. As in years past, this is ISCA's huge potluck dinner that features samples from local restaurants and potluck dishes from your neighbors. Thus far it's a great turnout of our local restaurants, including: Edible Arrangements, El Golfo, Ghar-e-Kabab, McGinty's Pub, Nicaro, and Olazzo; plus coffee provided by the downtown Starbucks. So that all our tummies are full, all attendees should also bring a dish to share; and we recommend that last names beginning with A-I bring salads, J-N serve side dishes and O-Z provide desserts; or bring your own favorite specialty or secret recipe.

This is another fine ISCA event brought to you by the hard working members of the ISCA Social Committee and is FREE to all current ISCA members. Not sure if you are a member? No worries, contact Phyllis Zusman at fzusman@erols.com or call her at 301-587-9063. Renewing your membership early makes the check in process go more smoothly for everyone.

This event is only successful with a host of VOLUNTEERS. We need helping hands to set up, serve and clean up. Please email Celeste Raker Dillon at dillensl@aol.com

Vote on Purple Line Resolution

By Tony Hausner

Last month, I presented the ISCA board's resolution (motion) on the purple line, which stated: **ISCA strongly supports the building of the purple line from New Carrollton to Bethesda. We prefer the light rail option over the bus rapid transit option as it provides better travel times and ridership projections. We favor the purple line as the first major step forward toward developing transit solutions to our transportation needs in preference to highway solutions and we continue to oppose Beltway widening.** (cont. on page 3)

"Purple Line" Again?

By Clarence Steinberg

This thing's like this year's flu—you think it's over with and voila, it's not. Two years ago, after long discussion following the Maryland Department of Transportation's plans for the line, at a properly publicized open membership meeting ISCA passed a motion that the Association support any transit plan that significantly reduced auto congestion nearby, and, if I recall rightly, congestion on the Beltway. In that MDOT itself then said that the Purple Line it designed might reduce Beltway congestion at most by two percent, our membership present and voting that motion deliberately omitted reference to the Purple Line pro or con. A separate motion passed, I believe, (continued on page 4)

INDIAN SPRING CITIZENS ASSOCIATION

Membership Application and Renewal

Dues are \$10 per household • Please Join or Renew Now • Dues cover 12 months from receipt

Send Check to ISCA • P.O. Box 3724 • Silver Spring, MD 20918-3724

Or drop off at 200 East Indian Spring Drive (c/o Phyllis Zusman, Treasurer)

Name(s): _____ Phone: () – Date: / /

Street Address: _____ Silver Spring, MD, 20901

Email: _____

If you are not sure of your membership status you can e-mail Phyllis, fzusman@erols.com or call, 301-587-9063 and she will give you the answer.

SAVE THE DATE

Monday, March 31
General Meeting
New Welcome Sign
Purple Line Resolution

Monday, April 14
Taste of Indian Spring
at Highland View
contact: Celeste
Raker-Dillen
dillensl@aol.com
301-585-8446

Saturday, April 19
Clean Up
contact: Eileen Fisher
eileenfisher@yahoo.com
301-589-2266

Saturday, June 7
Yard Sale

Saturday, June 28
**Independence Day
Celebration**

Tuesday, August 5
National Night Out
contact: Joyce Stocker
comit89@aol.com

Sunday, October 12
FallFest

Sunday December 7
Holiday Lights

PRESIDENT'S COLUMN

By Walter J. Gottlieb

Indian Spring is a great neighborhood year-round. But it really comes to life as the temperature rises. Yes, there are those stalwart joggers and walkers who provide some semblance of street life in the winter. But today is the first day in a few months when it was warm enough—okay, it's in the 40's, but the high 40's—to coax neighbors back out onto the street to wash cars, take walks, and stop to catch up with each other. (Maybe my daughter can take that bike ride she's been asking me about since January.) The trees are still bare—except for a few buds. The forsythia haven't bloomed yet. But I'm eagerly anticipating Spring. After all, it's part of the neighborhood's name.

Springtime means a new season of ISCA events, too. Mark your calendars for the Taste of Indian Spring on April 14th at Highland View Elementary. The neighborhood clean-up follows on April 19th. Many thanks to Celeste Raker-Dillen for organizing the Taste and to Eileen Fisher for organizing the Clean-Up.

Right now ISCA Members also have a chance to weigh in on the Purple Line issue by casting a vote on ISCA's proposed resolution of support. See the extensive Purple Line coverage in this issue of the newsletter for more details. Tony Hausner writes for the Board about the proposed resolution. Clarence Steinberg offers his viewpoint, as well.

On March 31, there will be an ISCA General Meeting. At that meeting, we will have a discussion of the proposed resolution on the purple line. In addition, Carien Quiroga of Arts on the Block will give a presentation about possible new welcome signs for Indian Spring. If you want to have input into the new signs, please plan on attending. And regardless of whether you come to the meeting, please vote on the Purple Line resolution per instructions in this newsletter. You can vote anytime from now until April 2nd by email or paper ballot. It only takes a few moments to vote, and well worth it—since the Purple Line will affect transportation in our area for decades to come.

ISCA Officers

President

Walter Gottlieb
president@iscaonline.com

Vice President Social Committee

Celeste Raker-Dillen

Vice President Civic Affairs

Elizabeth Magin

Secretary

Allegra Tasaki

Treasurer

Phyllis Zusman

Neighborhood Watch Organizer

Tony Hausner

Website Organizers

Tony Hausner, Allegra Tasaki

Newsletter Editor *vacant*

Newsletter Coordinators

Ali Breen, Audrey Cowgill

Past President

Tom Collins

Ballot for Purple Line Resolution

For the resolution

Yes _____

Against the resolution

No _____

Name _____

Vote on Purple Line Resolution

By Tony Hausner (cont. from page 1)

We asked for your comments on that motion. Ten people commented. Seven agreed, two asked technical questions, one objected. Clarence Steinberg, who objected, is writing his viewpoint in this newsletter and it will also be posted on the listserv as well. Please find the ballot on the top of this page.

You can submit your vote via email to Allegra Tasaki at tasaking@verizon.net, by mail to her at 201 Granville Drive, Silver Spring, MD 20901 or you can vote in person at the March 31st meeting. The vote deadline is April 2. As discussed below, we will discuss this issue at the March 31st meeting.

What a No Vote Means

If you vote no, then the resolution passed two years ago prevails, which basically said that ISCA supports transit solutions over highway approaches such as beltway widening. That is the position ISCA took two years ago, when 15 people attended the meeting. That resolution was adopted for the following reason. This author proposed a resolution/motion in favor of the purple line. However, Clarence Steinberg felt that the only way to go is build another metro line, with trains the same size and tracks as wide as currently used by metro.

The transit resolution was adopted as a compromise to cover both bases. However, if we vote no, ISCA will not be taking a specific stand on the purple line.

Clarence had argued at that time that we should build a metro line from New Carrollton to Bethesda instead of light rail. However,

the costs of that are prohibitive in today's economic environment and could involve taking a great deal of county residences in the process. He argues in his article that we should consider an outer purple line. However, the Maryland Transit Administration (MTA) has rejected that proposal as has the County Council as being too costly for further consideration. MTA has also rejected a number of other options as being too costly.

Why the Board Supports the Purple Line Resolution

The Maryland Transit Administration (MTA) has been studying the Purple Line for 15 years. They are about to finalize their recommendations. The Maryland Legislature has committed \$100 million towards the preliminary engineering of this system, which indicates that the state is very serious about going forward with the Purple Line.

In August, MTA will issue their Draft Environmental Impact Statement (DEIS), a critical document in the decision process. It will lay out all the options that are getting highest consideration and the pros and cons of each option in terms of their impact, costs, etc. Shortly after that there will be a public hearing. At that time, ISCA will have an opportunity to testify for or against the purple line and on which options. Then the governor will make his decision this fall on whether or not to proceed with the Purple Line and which options he prefers. This is our chance to have a say.

The Board believes the Purple Line is the best alternative under the current circumstances. The resolution/motion goes further and recommends light rail over bus rapid transit which is one of the key options. We recommend light rail over bus rapid transit

| Purple Line Alternatives Preliminary Travel Demand Forecasts & Cost Estimates | | | | |
|---|--------------------------------|-------------------------------|-------------------------------------|---|
| Alternative | Ridership (Daily Boardings) | New Transit Trips Over TSM | Capital Costs (Millions -2007\$) | Operating & Maintenance Costs (Millions -2007\$) |
| Alternative 2: TSM | - | N/A | \$45-50 | \$14.6 |
| BRT | | | | |
| Alternative 3: Low Investment BRT | 37,000 -- 40,000 | 3,000 – 3,200 | \$420 – 460 | \$17.3 |
| Alternative 4: Medium Investment BRT | 49,000 -- 52,000 | 6,900 – 7,200 | \$620 – 700 | \$15.6 |
| Alternative 5: High Investment BRT | 56,000 -- 59,000 | 9,100 - 9,400 | \$1,120 - 1,240 | \$14.4 |
| LRT | | | | |
| Alternative 6: Low Investment LRT | 57,000 – 59,500 | 9,700 -10,000 | \$1,160 - 1,270 | \$26.4 |
| Alternative 7: Medium Investment LRT | 60,000 – 63,000 | 10,600 – 11,000 | \$1,175 - 1,350 | \$25.0 |
| Alternative 8: High Investment LRT | 65,000 – 68,000 | 12,400 – 12,900 | \$1,580 - 1,750 | \$22.8 |

Vote on Purple Line Resolution

By Tony Hausner

(cont. from page 3)

because MTA estimates that it will have higher ridership and faster travel times compared to bus rapid transit.

In early December, MTA released initial projections for ridership and costs. These are critical elements in the decision-making process. These figures have since been revised. I will present mid range figures for one of the most attractive options: medium investment light rail.

MTA projects average daily ridership for this option of 62,000 and capital costs of \$1.25 billion. These figures compare favorably with other projects around the U.S. that have been recently approved by the Federal Transit Administration. See the table for more details. TSM means transportation system management, and reflects steps such as improvements in the bus system.

Light rail has higher ridership figures than bus rapid transit because it can have more than one car per train, is more comfortable, and is faster.

Undemocratic

Clarence Steinberg feels that by not having everyone vote in person, we are not being democratic. The board has found that attendance on most issues involve only a handful of people. This is exemplified by the fact that only 15 people attended the meeting when we took a position on transit over highways, and that was when we had highway expansion more dramatically on our horizon.

In order to get the most persons to vote on this issue, we will allow voting via email or mail in addition to voting at the March 31st meeting. By allowing votes by mail and email, we hope to get a wider vote than if the voting was done in person. This can be seen as a virtual meeting. However, we have also provided an opportunity for those who are interested in discussing this issue to do so at the next general meeting on March 31st. Therefore, you can either submit your vote via email or mail or at the meeting, and you can submit your vote anytime up to April 2nd.

Celebrate Earth Day weekend with a clean neighborhood!

by Eileen Fisher

Join your friends and neighbors in keeping our neighborhood sparkling and litter free. The annual ISCA Neighborhood Clean Up will be held on Saturday, April 19. Volunteers will meet at the Indian Spring Recreation Center at 1:00 pm and form clean-up teams to tidy up areas around the neighborhood including: the playground area, Hastings Drive entry, the wooded areas bordering the sound barrier, and the triangle at Colesville Road and Franklin Avenue. Please dress appropriately for mud and potential poison ivy. Rain date will be Sunday, April 20—same time, same meeting place.

“Purple Line” Again?

By Clarence Steinber

(cont. from page 1)

believe, opposing MDOT’s plan to widen the Beltway for then-planned toll lanes. (I’m trying to get a copy of those minutes.)

A couple of weeks ago our Newsletter’s feature story announced an ISCA Board’s “draft resolution” affirming (1) ISCA’s strong support for the “Purple Line,” (2) our preference that the line be “light rail,” and (3) our opposition to “highway solutions to our transportation needs.” The “resolution” would essentially reverse the motion our members passed two years ago. The Board asks the membership now to vote its “resolution” up or down before a public discussion of its merits.

As I faintly recall from a few years as ISCA vice president and acting president, our by-laws don’t invest the Board with authority to draft a policy resolution for referendum. Boards back then wouldn’t think of acting thus, and we handled big issues—de facto school re-segregation and massive re-development schemes for Silver Spring among them. ISCA’s positions always were floor motions argued, amended and passed at open membership meetings. The current Board’s “resolution” rules from above, not a good precedent. Surely its makers would find it so were a Board opposed to the Line to offer its own resolution for referendum. Maybe we ought to amend our by-laws with a section reading that all policy positions emerge exclusively from motions originated, debated, and passed at membership meetings.

Debate at a membership meeting might have avoided at least three questionable assertions in in this past Newsletter’s case for the Board’s “resolution.”

First, consider “. . .building of the Purple Line is critical to ISCA’s future because it provides an important alternative to the State’s plan to widen the Capital Beltway” followed by “so transit [i.e., mass transit] doesn’t solve our traffic problems, but it does solve transportation problems.” How can this thing not solve our traffic problems and yet provide an “important” alternative to widening the Beltway? What ISCA transportation problems does the projected line solve? Granting that 50 of us might drive daily to a downtown garage, congestion or no congestion, park, and take the line east or west, is there justification for spending a billion and a half on building it?

All participating volunteers are recommended to sign up in advance so that we can estimate supplies and snacks, BUT walk-ups are always welcome.

A special note to students: you can earn community service points by participating in the clean up.

Please contact Eileen Fisher at eileenfisher@yahoo.com to join the cleaning fun!

“Purple Line” Again?

By Clarence Steinber (cont. from page 4)

Would it solve our principal problems, congestion, especially on the Beltway, and air pollution congestion generates?

Then consider the Newsletter’s reprint of MTA’s Purple Line Ridership and Costs chart. How can one project costs when the light rail’s route’s still undecided? Silver Spring opponents to proposed routes prevailed with MTA and the rail’s advocacy group—formerly Action Committee on Transit (ACT) and now, as we can see from its logo concluding the article, Purple Line Now! Tunneling and property-taking is costly and subject to overruns. Then there’s the chart’s ridership numbers problem. Current figures are projected to mid-century, upon what basis we know not. Might it be new development and re-development along the route? Apparently MTA hired a firm to come up with new figures that would qualify the project for the Federal Highway Trust Fund’s partial funding. Former figures are far lower, but reflect use of the line much sooner than mid-century. Most of us won’t even be memories here then. Our needs are now.

Then also consider “some have argued that we should build a metro line from New Carrollton to Bethesda instead of light rail. However, the costs of that are prohibitive in today’s economic environment and would involve taking a great deal of county residences...” Who are those “some”? I know none. What “some” have said supports in principle the original Purple Line our former County Ex. Doug Duncan proposed, effectively a big segment of a future circle line. In our county it would run on relatively inexpensive land outside the Beltway. It would use Metro trains. It has the potential to link all Metro spokes and establish a way to diminish commuter traffic significantly. It would meet our needs to reduce congestion and air pollution. Its projected cost was \$4 billion. That may seem daunting, but absent construction of the Bethesda-New Carrollton line—projected cost around \$1.5 billion—and applying that amount to the \$4 billion, the original Purple Line’s projected cost would be \$2.5 billion. The Purple Line Now! people claim that amount of money can’t be raised. ACT argued from its start a decade ago that though perhaps less desirable, its “inner Purple Line” could be funded and hence is expedient.

If one could demonstrate how a circle line could be funded and built now, I wonder whether ACT and its successor would join in pursuing it. I hope they would. A practical plan to build and fund a Metro circle line exists. ISCA well might review it. The plan balances interests of residents, employees, and employers on the one hand and with a still-developing, expanding downtown Silver Spring and increasingly trying regional commuting needs on the other. With this plan we can hope to breathe better air, especially if, as the plan proposes, we also break those highway bottleneck weekday backups bathing our lungs in particulates. We could discuss this plan at the next or following membership meeting. Two related topics we might address are consequences to us of the White Oak FDA project and the strong disinterest of Langley Park residents in MTA’s version of the Purple Line’s run on University Boulevard.

Meanwhile we’re told to vote prematurely. We each have our options on that.

Taste of Indian Spring

By Celeste Raker-Dillen (continued from page 1)

or call her at 301-585-8446 to sign up or if you have questions. And rest assured, all volunteers will also get a chance to enjoy the bounty of culinary delights.

This is a really fun neighborhood tradition celebrating good food and good friends at our neighborhood’s home elementary school. As with last year, the gymnasium will be open for kids to run around, thus making the dining area in the all purpose room even more conducive to catching up with your neighbors. So, mark your calendar and we’ll see you there!

Thanks to the 2008 Taste of Indian Spring Restaurant Donors: Edible Arrangements, El Golfo Ghar-e-Kabab, McGinty’s Pub Nicaro, Olazzo and Starbucks (on Ellsworth)

ISCA EXPLORES NEW WELCOME SIGNS

By Walter Gottlieb

The ISCA Board has been exploring the possibility of commissioning new welcome signs for the neighborhood from Arts on the Block, a nonprofit organization that trains youth in the visual arts. Arts on the Block specializes in artwork for community spaces. They are responsible for the mosaic design on the Georgia Avenue underpass and a new public mural at New Hampshire & Piney Branch, as well. They work in both mosaic and paint.

We have invited Carien Quiroga, Arts on the Block’s Lead Artist, to make a presentation at ISCA’s March 31st General Meeting. She will show samples of the group’s work and discuss possible choices for the welcome signs. At this point, we are only in the exploratory phase and seek the community’s input before making any decisions—either practical or aesthetic. The March 31st meeting is an excellent opportunity to view the kinds of artwork currently being considered, and to express your opinions about the welcome signs. Please join us!



Heather Sauter

Educational Consultant

301-565-4013

Ask me about:
Educational Toys, Games & Books
In-Home Parties
Catalog / Phone / Internet Orders
Fundraisers / Gift Baskets

Earn meaningful income while making a difference in the lives of children and their families!

www.makelearningfun.net

ISCA Pedestrian Safety Update

By Jennifer Chambers and Andrew Kleine

In the last 18 months, two Indian Spring adolescents have been hit by cars while in the crosswalk on Franklin Avenue at Seminole St. The most recent one, November 2007, caused much discussion on the ISCA list serve which set into motion a visit from Sgt. Harmon, Head of the Silver Spring Traffic Division (MCPD), to the December ISCA general meeting. At that meeting, a motion was passed to send a letter to DPWT requesting they begin the process for installing speed humps. Below is a copy of the letter sent to DPWT. In general, acquiring speed humps is a three step process: first, a letter requesting speed humps is submitted to DPWT, second, a street survey is conducted for a vehicle count and average speed, and third, a petition is circulated for residents of the street and intersecting streets. Please visit the DPWT website for specific information on the speed hump process:

www.montgomerycountymd.gov/trstmpl.asp?url=/content/dpwt/Operations/Traffic/speed_humps.asp or go to www.montgomerycountymd.gov, Departments, Public Works and Transportation, Traffic Calming.

In 2007, both the police and DPWT's mobile speed signs have been placed on Franklin Avenue, near Caroline and Seminole. It is used to educate motorists of their speed, in addition to providing citizens data of vehicle speeds at a location. In addition, the police have monitored speed on Franklin Avenue

Also in 2007, Indian Spring contributed to the Presidents Council of Silver Spring Civic Association's (Prezco's) pedestrian safety action plan, which recommended improvements in 12 neighborhoods in and around downtown Silver

Spring. The plan includes eight projects for Indian Spring. To see the plan, go to www.prezco.org. Prezco's plan inspired County Executive Leggett to develop a countywide pedestrian safety initiative, with specific project, funding commitments and performance measures. You can also link to that plan through the Prezco web site.

*Indian Spring Citizen's Association
P.O. Box 3724
Silver Spring, MD 20918*

January 24, 2008

*Mr. Emil Wolanin
Chief, Traffic & Engineering Operations
Department of Public Works and Transportation
101 Orchard Ridge Dr.
Gaithersburg, MD 20878*

Dear Mr. Wolanin,

On December 10, 2007, the Indian Spring Citizen's Association (ISCA) voted to send a letter requesting the Department of Public Works and Transportation begin the process for speed humps on Franklin Avenue from Colesville Road to University Boulevard.

The residents at that meeting voted to request speed humps for Franklin Avenue after two adolescents were hit by a car (October 9, 2006 and November 27, 2007) in the crosswalk on Franklin Avenue at Seminole Street. Furthermore, residents in Indian Spring are angered that motorists use Franklin Avenue as a speedway between Colesville Rd. and University Blvd. We know that speed humps are an effective means of slowing traffic down; therefore, we request that DPWT begin the speed hump process for Franklin Avenue and add this request to the DPWT/Prezco pedestrian safety chart.

ISCA is a member civic of Prezco. We appreciate all that DPWT is doing to work with Prezco to make Silver Spring a more pedestrian friendly and safe community. Thank you.

Sincerely,

*Walter Gottlieb
President, Indian Spring Citizen's Association*

*cc:
Councilmember Valerie Ervin
Andrew Klein
Sgt. Harmon*

Kristin Shenk Photography



Specializing in family and children's portraits and the restoration of your old family photos

kristinshenk@comcast.net
(301) 275-1373



Erie
Insurance[®]

CARL RUTAN INSURANCE AGENCY, INC.
Carl Rutan

Auto—Home—Business—Life

9912 Colesville Road, Silver Spring, MD 20901
(301) 681-0200 • Fax: (301) 681-8877
carlrutan@verizon.net • www.carlrutaninsurance.com

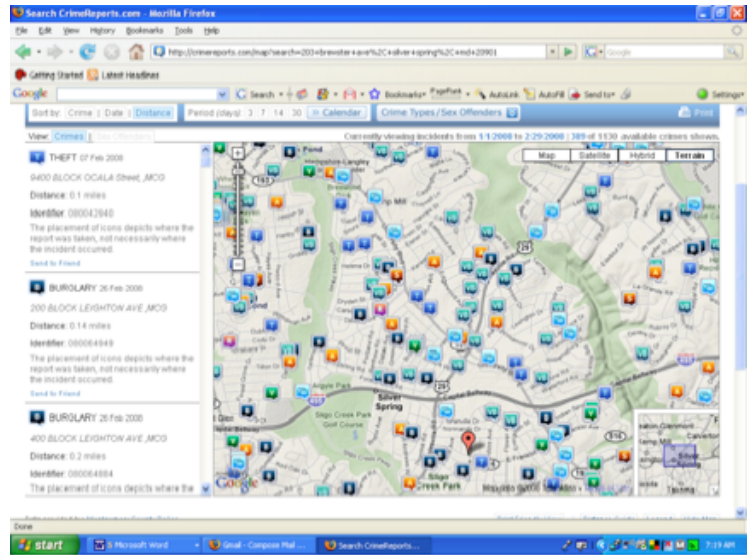
Crime reports

By Joyce Stocker and Tony Hausner

As has been posted on the listserv, the county has recently provided us with a new crime report. The system is called CrimeReports.com. One can get reports on a daily basis. Anyone can use the system. WJLA-TV interviewed Tony when this report first came out on January 29, as Tony played a key role in encouraging this system and pilot-testing it. Go to <http://www.wjla.com/news/stories/0108/491760.html> to see the interview, which is also posted on the iscaonline.com site under ISCA in the Press.

For the last two weeks in February, this report indicated that there were four home burglaries and two vehicle burglaries in the Indian Spring neighborhood. For the months of January and February, there were eight home burglaries, one theft, six vehicle burglaries, and one vehicle theft. Of particular concern are burglaries occurring on Moss Avenue and vehicle burglaries at the YMCA. I have asked the police to increase patrols on Moss Avenue and I suggest that anyone visiting the Y, make sure you lock your car and leave nothing of value in sight. I have raised these issues to Commander Johnson of the Silver Spring district and we plan to talk with the Y and with Eastern Middle school.

The CrimeReports.com is very easy to use. Anyone can open an account. I plugged in my home address. You can specify which crimes you want to look at, order the crimes by distance, date, or type of crime; specify dates, e.g., past 3 days, 7, 14, 30, or longer.



However, as of now, there is only data back to October 2007. We plan to provide reports every two weeks to the listserv. We hope this information will allow us to make recommendations on crime prevention, help us to work with the police in identifying trends and catching suspects, justify certain interventions such as increased patrols for certain streets, work with other organizations such as the Y or particular schools, and identify if certain sections of the neighborhood need special attention. As always, we hope that you all get involved in our Neighborhood Watch. For more info, please contact, Joyce Stocker at comit89@aol.com or Tony Hausner at thausner@gmail.com.

Joseph E. Frew, D.D.S.

General Dentistry

Top Rated Dentist in a Washington Metropolitan Consumer Magazine for...

- Producing results you expect
- Discussing your problems
- Teaching prevention
- Being gentle and pleasant

Now accepting new patients

9604 Colesville Road
Silver Spring, MD 20901

Just minutes away

301-585-3800

ISCA Membership!

ISCA'S next BIG social event will be THE TASTE OF INDIAN SPRING. This has always been a big success and many of our members eagerly look forward to it. Below is a list of those members who are paid through April 14th.and beyond. If you are not on this list your membership has expired and you will have to bring it up-to-date to attend. You may send a check to our mail box, ISCA, P.O. BOX 3724, Silver Spring, MD 20918-3724 or drop it off at 200 E. Indian Spring Dr. Of course you can always pay at the door but we encourage you to avoid the line by paying in advance. The membership dues are still \$10.00 made out to ISCA. Your dues are always good for one year from the date you paid. Thanks, Phyllis Zusman.

| LAST NAME, FIRST NAME | PAID THRU |
|--------------------------|-----------|
| Abdalati, Cheri & Waleed | 11/1/2008 |
| Acworth, Will | 11/1/2008 |
| Adamson, Vickie & David | 10/1/2009 |
| Aley/Harris, William/Dan | 9/15/2011 |
| Alsop, Edward & Lynne | 12/1/2008 |
| Anderson, Nancy | 4/15/2008 |
| Arbacher, Judith | 10/1/2010 |

| <u>LAST NAME, FIRST NAME</u> | <u>PAID THRU</u> |
|------------------------------------|------------------|
| Auerbach, David & Laura | 11/1/2010 |
| Balmer, Cathy & Arthur | 7/1/2008 |
| Barbiero/Gwynn, Daniel & Rosemary | 12/15/2008 |
| Barry, Lisette & Jerome | 11/1/2010 |
| Bathon/Melke, Matthew/Amy | 6/1/2009 |
| Beatty, Judy & Charles | 6/20/2008 |
| Berry, Charles & Janet | 11/1/2008 |
| Blaine, Margaret | 6/1/2008 |
| Bowcut, Jana | 5/1/2008 |
| Boyer, Pete & Laura | 12/1/2008 |
| Bradford, Mary & William | 4/15/2008 |
| Breen, Ali & Sean | 9/15/2008 |
| Brigham, Robert | 10/15/2008 |
| Brown, Christine & Geoff | 11/1/2008 |
| Bryce, Beverly | 4/1/2010 |
| Brzostowski/Shugart, Joseph/Erika | 12/1/2008 |
| Bullock, Ann & Robert | 11/1/2010 |
| Buonora, Barbara & David | 6/1/2009 |
| Burke/Bodammer, Robin & Andrew | 2/1/2009 |
| Cahan, Jules & Phylis | 10/1/2008 |
| Caplen/Stuart, Natasha/Patrick | 11/1/2008 |
| Carlson, Lesley & Eric | 11/1/2008 |
| Caron/Dart, Liz & Tim | 11/1/2008 |
| Case, Donna & David | 11/1/2008 |
| Cason, Jennifer/Tom | 11/1/2011 |
| Chambers, Tracey | 10/1/2009 |
| Chambers/Kowell, Jennifer & Joseph | 4/15/2009 |
| Clark, Chris and Tim | 4/15/2008 |
| Clark, Heidi & Matthew | 5/15/2008 |
| Collins/Huang, Ann & Chris | 2/1/2010 |
| Cook, Ronald/Barbara | 10/1/2008 |
| Cossu/Ayzanoa, Maria & Gerardi | 4/15/2008 |
| Cotterill, Philip & Sarah | 11/1/2008 |
| Cowgill/Smith, Audrey & Steve | 10/1/2008 |
| Curran, Janis & Richard | 11/1/2008 |
| Dalbey/Hunter, Matthew/elizabeth | 4/15/2009 |
| Damare, Michelle & Ryan | 6/1/2008 |
| D'Antuono, Matthew & Carol | 10/7/2008 |
| David, Catherine & Brice | 11/1/2010 |
| Dawson, Judy & Jack | 4/15/2008 |
| Day/Urgo, Kelly & Brian | 10/1/2008 |
| Deroche/Grazio, Jason & Lori | 6/1/2008 |
| Despard, Jessie | 11/1/2008 |
| Diehl, Elisa | 6/1/2008 |
| Dietz, Lou Ann & James | 12/15/2008 |
| Dillen/Raker, Celeste & Jeff | 4/15/2008 |
| Dorsey, Toby & Mollie | 12/1/2008 |
| Eisenhart, Ida | 6/1/2008 |
| Elinoff, Jason & Lori | 10/1/2008 |
| Erickson, Margaret & Michael | 10/1/2008 |
| Esherick, Nancy & Kirk | 3/1/2009 |
| Fee/Miller, Colleen/Jack | 11/1/2008 |
| Filbert, Anabelle/Bryson | 11/1/2008 |
| Fisher/Valentine, Eileen & Harvey | 6/1/2008 |
| Flanary, Robin Neale | 4/15/2008 |
| Flood, Diane & Mike | 6/1/2008 |
| Fowler/Pressley, Susan & Nelson | 12/15/2008 |
| Freestone, Ed & Jane | 12/15/2008 |
| Frye, Mary Anne & Don | 10/1/2008 |
| Fults, Jacob & Piper | 12/1/2008 |
| Gadbois, Catherine & George | 12/15/2008 |
| Galbraith, Jeanne & Steve | 11/1/2008 |
| Gallagher, Jeffrey & Vivien | 12/1/2008 |
| Ganong/Khoury, Carylton & Mireille | 11/1/2008 |

| <u>LAST NAME, FIRST NAME</u> | <u>PAID THRU</u> |
|--------------------------------------|------------------|
| Ganzel/Schneider, Penny& Edwin | 11/1/2009 |
| Gavin, Marie&Robert | 4/15/2008 |
| Gillis, Diane & Stephen | 10/1/2008 |
| Gladmon, Sandy & Jim | 6/15/2009 |
| Gottlieb/Granatstein, Becky & Walter | 4/15/2008 |
| Gottlieb/Miller, Arlene & Chaz | 11/1/2008 |
| Graef/Anderson, Jessica & Gary | 4/15/2008 |
| Green, Dale | 12/1/2008 |
| Greenstein, Gail & Jerry | 4/15/2008 |
| Griffith, Charles & Gayle | 11/1/2008 |
| Gunn, Philip | 12/1/2008 |
| Guse/Shelton, Brian/Theran | 9/15/2008 |
| Haas, Rachel & Jeff | 4/15/2009 |
| Hall, John & Mary | 10/1/2008 |
| Hammer, Jeanne | 11/1/2008 |
| Hankins, David | 12/1/2008 |
| Hanna/Srinivasan, Nancy & Suresh | 12/1/2008 |
| Hartnett, Johnette T. | 10/15/2009 |
| Hatcher, Mike & Betsy | 11/1/2009 |
| Hauver, Elizabeth & Mark | 5/15/2008 |
| Heard, Maria & Brian | 9/15/2008 |
| Helsing, Stephanie & Jeffrey | 4/15/2009 |
| Hendricks, Jennifer, Ben | 11/1/2008 |
| Hennessee, Valerie & Ted | 4/15/2008 |
| Henson, Tessa & Ed | 11/1/2008 |
| Hess/Freedman, Mary Ann & Dan | 4/15/2009 |
| Higgins, Ann & Paul | 3/1/2010 |
| Hinderlie, Holly & Keith | 11/1/2008 |
| Hoelman, Malinda & Louis | 6/1/2009 |
| Hoffman, Marc | 11/1/2008 |
| Horton, Ann | 11/1/2008 |
| Hoskinson, Carolyn & Jim | 7/1/2008 |
| Howard, Anna & Sted | 6/1/2008 |
| Howe/Ratkowski, Susan/Patrick | 10/15/2008 |
| Howell/Moga, Leah & Josh | 12/1/2009 |
| Hughes/Hyland, Julia & Paul | 6/1/2008 |
| Hulsebus/Rose, Sage/Jon | 3/15/2009 |
| Ishak, Margaret | 12/1/2008 |
| Jaeggi, Richard & Yoshiko | 6/1/2008 |
| Janus, Cynthia | 5/1/2008 |
| Jasper/Gondi, Christine & Robi | 4/15/2008 |
| Jenkins, Shawn & family | 1/15/2010 |
| Jordan, Diane & Stewart | 7/31/2009 |
| Kane, Stephan/Vicki | 6/1/2008 |
| Kay, Peggy & Fred | 12/1/2009 |
| Keenan, Chris & Corby | 2/15/2009 |
| Kirkham, Patricia & Paul | 3/1/2010 |
| Kleine, Andrew & Kelly | 10/15/2008 |
| Kornke, Grace & Michael | 2/1/2009 |
| Kraemer, Amanda & Mark | 3/1/2009 |
| Kruhm/Edgley, Gail & Jerry | 12/15/2008 |
| Kutzer/Monaghan, Carol & Ed | 4/15/2009 |
| Landers/Denniston, Kathleen/Alan | 11/1/2009 |
| Lane/Kokkinakis, Rebecca & Steven | 12/1/2008 |
| Leonard/Mintzer, Amber & Irving | 6/1/2009 |
| Lilly, Amy | 1/1/2009 |
| Lilly, Terese | 12/1/2010 |
| Lindsay, Elaine&John | 11/1/2008 |
| Link/Kelderman, Ann & Eric | 11/1/2008 |
| Linstrom, Ann & Tom | 6/1/2008 |
| Lodish, Jay & May | 10/1/2008 |
| Lorenzen, Laura | 6/1/2008 |
| Lynam, Kelly & Ben | 4/15/2009 |
| Magin, Elizabeth | 5/5/2008 |

| <u>LAST NAME, FIRST NAME</u> | <u>PAID THRU</u> |
|----------------------------------|------------------|
| Magno/Wolff, Linda & William | 4/1/2009 |
| Manale, Andrew & Shizumi | 12/1/2008 |
| Manning, Richard & Anita | 4/15/2009 |
| Marchionini, Brian & Ashley | 4/15/2008 |
| Margulies, Alice & Marvin | 5/15/2008 |
| Marks/Klimaski, Katharyn & James | 11/1/2008 |
| Maydan/Nicotera, Anne & Gregory | 6/1/2008 |
| McAndrew, Kara & Edward | 7/15/2008 |
| McCann, S. Tony & JoAnn | 12/1/2008 |
| McCaw, Deb & Jeff | 11/1/2008 |
| McClay, Brian & Sharon | 11/1/2008 |
| McClay, Ida & Bill | 12/1/2008 |
| McDonald, Sarah & Eric | 11/1/2008 |
| McHugh, Linda & Joe | 4/15/2008 |
| McKee, Gloria & Kevin | 12/1/2008 |
| McLean, Naomi R. | 10/1/2008 |
| Miller, Jolynne | 10/15/2008 |
| Montemarano, Arlene | 12/1/2008 |
| Moorin, Bernard & Aida | 6/1/2008 |
| Morgan, Amir | 5/15/2008 |
| Morgan, Sarah | 4/15/2008 |
| Morris, Anne & Willard | 11/1/2008 |
| Morris, Jeff & Jan | 10/15/2008 |
| Morrison, Anita/William | 12/1/2008 |
| Nasser, Michael & Hayat | 12/1/2008 |
| Newhouse, Corliss | 12/1/2008 |
| Newton, Kellie L. | 6/1/2008 |
| Niefeld, Todd & Chrissy | 12/1/2009 |
| O'Connell, D.S. | 10/1/2008 |
| Orr, Lisa | 4/15/2008 |
| Ortman-Fouse, Jill & David | 11/1/2008 |
| Osherow/Prouty, Michele & Doug | 10/1/2008 |
| Owen, Erin & Rob | 10/1/2008 |
| Paleologos, Peter & Elli | 12/1/2008 |
| Parachini, Elaine & Lawrence | 5/1/2009 |
| Parrent, Tony & Mary Ann | 7/1/2008 |
| Peterman, Donnell & Michelle | 12/1/2008 |
| Petz, Dena & Robert | 2/1/2009 |
| Pizer, Gerald & Stephany | 2/1/2010 |
| Plank, Steve and Holly | 11/1/2008 |
| Pritzlaff, Charles & Olivia | 12/15/2008 |
| Reser/Swope, David/Dom | 3/1/2009 |
| Reynolds, Pat & Bill | 12/15/2008 |
| Riley, Mick & Kelly | 12/1/2008 |
| Rivoal/Foss, Denise & Andrew | 6/1/2008 |
| Roberts, Winifred | 12/1/2008 |
| Robinson, Carolyn & Michael | 8/15/2008 |
| Ropeik/Shauer, Larry & Janet | 10/15/2009 |
| Rothrock/Grovic, Holly & Mark | 4/15/2008 |
| Roule, Trifin & Jeannie | 10/15/2010 |
| Rupli, Brenda | 3/1/2009 |
| Russell, Laura | 6/1/2008 |
| Russell/Mason, Sage & Jeff | 12/15/2008 |
| Sahli, Nancy | 12/1/2008 |
| Salon/Goldman, Rebecca & Jay | 11/1/2009 |
| Samuel, Monique | 12/1/2008 |
| Sauer, Elaine & Todd | 9/15/2008 |
| Schantz, Donna & Lloyd | 11/1/2008 |
| Schenck, Marshall & Lalita | 8/15/2008 |
| Schieber, David | 5/15/2008 |
| Seymour, Anne | 10/1/2008 |
| Shah, Vrinda | 1/1/2010 |
| Shaw, Suzanne & Frank | 12/15/2008 |
| Shawer, Amy & Tariq | 11/1/2008 |

| <u>LAST NAME, FIRST NAME</u> | <u>PAID THRU</u> |
|--------------------------------------|------------------|
| Shiffer/Campbell, Rebecca & Robert | 12/15/2008 |
| Shindel/Romer-Friedman, Cory & Peter | 10/15/2008 |
| Siniawsky/Sutter, Beth & Doug | 11/1/2008 |
| Solano/Stiers, Silvana & Gretchen | 10/11/2009 |
| Spahn, Carol & Andy | 11/1/2008 |
| Sperling, Delight & Thomas | 9/15/2008 |
| Steinberg, Clarence & Marc | 10/1/2009 |
| Stephan, Kathleen & Robert | 10/1/2008 |
| Stock, Tom & Alix | 4/1/2009 |
| Stocker, Joyce | 5/1/2008 |
| Stufft, Julie & Tim | 11/1/2008 |
| Sweitzer/Richert, Karen & Mark | 10/1/2010 |
| Tabak, Carolyn | 2/15/2009 |
| Tasaki/Ng, Allegra/Brian | 5/15/2008 |
| Tellez, Carlos & Rachel | 10/15/2008 |
| Thomas, Elizabeth & William | 5/15/2008 |
| Thornburg/Conrad, Tim & Steve | 10/1/2008 |
| Tiller, Elaine & Bob | 4/15/2008 |
| Tilson, Rich | 12/1/2008 |
| Toledo, Elza | 12/1/2008 |
| Topmiller, Margie & Greg | 12/1/2008 |
| Tortorelli/Allen, Valeria & Jan | 11/1/2008 |
| Townsend, Georgia | 2/1/2009 |
| Turner, Lynn/Eli | 6/1/2008 |
| Tyler, Diane & James | 4/15/2009 |
| Underwood, Janis & Michael | 12/1/2008 |
| Varmer/Philbin, Jeanne & Ole | 5/15/2009 |
| Verburg, Denise | 10/15/2008 |
| Vogt, Marie & David | 11/1/2008 |
| Waites, Gerard & Joan | 7/1/2008 |
| Wallace/Vink, Kim & Robin | 12/15/2008 |
| Wallenburg, Elizabeth & David | 6/1/2008 |
| Walterman, Frances & Scott | 12/15/2009 |
| Warburton, Karen | 12/1/2008 |
| Ward, Karen & David | 11/1/2008 |
| Warden, Joanna & Andrew | 6/15/2008 |
| Weinzimer, Leah & Robert | 10/16/2008 |
| Weppler, Reid & Audrey | 11/1/2008 |
| Wertz, Pamela & Erik | 11/1/2008 |
| Whalen, Jennifer | 11/1/2008 |
| Whitesell/Fitzpatrick, Heidi & Lisa | 6/1/2008 |
| Whitlock/Jones, Victoria/Kevin | 12/1/2008 |
| Williamwoski, Dorothy & Edward | 5/15/2009 |
| Willey, Joseph | 4/15/2008 |
| Wilson, David & Sue | 11/1/2009 |
| Winfield, Frank & Dorothy | 7/1/2010 |
| Winick/Carley, Iantha & Paul | 10/6/2009 |
| Wong, Sophia & Wylie | 4/15/2008 |
| Wood, Robert & Kelly | 5/1/2009 |
| Woodhams, Jim & Marca | 4/1/2009 |
| Woods, Dorothy & Kent | 12/1/2008 |
| Xanten, Jennifer | 5/15/2008 |
| Zaudtke, Mary Teresa & Peter | 11/1/2008 |
| Zisseron, Jane & Jerry | 6/1/2008 |
| Zusman, Phyllis & Fred | 10/1/2008 |



Indian Spring Real Estate Market Report

Provided by

Rhonda Mortensen, Licensed MD & DC
Long & Foster Real Estate, Inc.
Founders Club * Top 5% Realtors

Be Ready For The
 Spring Real Estate Market --
Call Me Now!

Homes Under Contract Since February 2008 *

| Address | List Price | Style | BR | FB | HB |
|----------------------------|------------|----------|----|----|----|
| 9520 Biltmore Drive | \$429,000 | Colonial | 3 | 1 | 1 |
| 213 Brewster Avenue | \$399,900 | Rambler | 3 | 2 | |
| 213 University Boulevard E | \$299,900 | Colonial | 3 | 1 | 2 |

Partial List of Homes Currently on the Market *

| Address | List Price | Status | Style | BR | FB | HB |
|----------------------------|------------|--------|----------|----|----|----|
| 214 Granville Drive | \$445,000 | Active | Colonial | 3 | 1 | 1 |
| 9937 Moss Avenue | \$450,000 | Active | Cape Cod | 3 | 3 | |
| 202 Indian Spring Drive E | \$499,900 | Active | Colonial | 3 | 1 | 1 |
| 9404 Ocala Street | \$530,000 | Active | Rambler | 3 | 3 | |
| 9506 Evergreen Street | \$384,000 | Active | Cape Cod | 3 | 2 | |
| 9405 Seminole Street | \$489,999 | Active | Colonial | 3 | 2 | 1 |
| 9935 Moss Avenue | \$459,000 | Active | Cape Cod | 3 | 2 | |
| 9704 Hastings Drive | \$565,000 | Active | Colonial | 4 | 3 | 1 |
| 9412 Garwood Street | \$449,000 | Active | Cape Cod | 4 | 2 | |
| 9711 Lawndale Drive | \$550,000 | Active | Colonial | 4 | 2 | 1 |
| 321 University Boulevard E | \$539,000 | Active | Colonial | 3 | 2 | 1 |
| 235 University Boulevard E | \$450,000 | Active | Colonial | 5 | 2 | 1 |

* The information above was provided by MRIS. These lists include only those homes listed in the MRIS system and does not include homes for sale by owner. Information is deemed reliable but is not guaranteed

Check Out Just A Few of My Listings – More on www.helpmerhondarealestate.com!



120 University Blvd E Silver Spring
 4 BR, 2 FB, 1 HB \$449,000



9603 Clearview Pl Silver Spring
 3 BR, 3 FB \$539,000



12819 Matey Road Silver Spring
 3 BR, 2 FB \$385,000



Rhonda Mortensen



Bethesda Gateway Office, 4650 East West Highway, Bethesda, MD 20814
 Office: 301-907-7600 * Cell: 301-326-6401 * Email: RhondaMortensen@aol.com



Sponsor of www.indianspringneighbors.com